

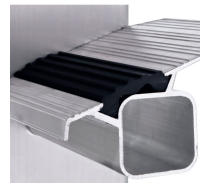


# Everest Plus 2E - 40467

Better footing at the top. The push-up ladder with 80 mm deep treads instead of rungs.

## Product description

- Provides a safe place to stand for work at height. The push-up ladder with treads instead of rungs.
- Particularly light thanks to the combination of stepladder and rung ladder (hybrid design).
- The upper ladder is fitted with plastic wheels to prevent damage to walls.
- Height adjustment in increments of 280 mm.
- Upper ladder fitted with plastic wall wheels.
- Locks safely by means of hooks with lift-off retainer.
- Ladder width: 420 mm.
- Stiles and guide fittings of extruded aluminium sections for maximum safety.
- Replaceable 2-component plastic end caps ensure secure positioning without the risk of slipping.



## Hints and special features

Complies with EN 131 Professional.

## Product features

Coating <b>natural</b>	Connection Stile-Rung <b>flanged</b>	External width of lower ladder <b>420 mm</b>	Load capacity <b>max. 150 kg</b>	Material <b>Aluminium</b>
Number of rungs <b>8</b>	Number of rungs <b>2 x 8</b>	Overall length, extended <b>4.2 m</b>	Overall length, retracted <b>2.52 m</b>	Pitch rung/tread <b>265 mm</b>
Standards <b>EN 131 professional</b>	Stile depth <b>73 mm</b>	Transport dimensions <b>approx. 2.520 mm x approx. 420 mm x approx. 200 mm</b>	Warranty <b>10 years</b>	Weight <b>11.5 kg</b>
Wheels	Wide crosspiece	Working height		



Rubber

0.9 m

4.9 m