

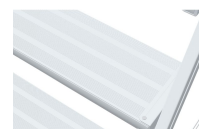


# Mobile access steps with platform, single-sided access, with light-alloy treads and platform - 41974

Can be released safely and quickly for flexibility while working: comfortable ascent, four sprung castors for stability and easy handling.

## Product description

- Can be released safely and quickly for flexibility while working: comfortable ascent, four sprung castors for stability and easy handling.
- Quick and easy assembly thanks to the new connecting elements.
- Mobile and ready for operation in no time with four sprung swivel castors (two of each with brakes).
- Maximum safety through platform railing at a height of 1.00 m on three sides.
- Comfortable ascent through treads with a depth of 200 mm.
- Spacious platform, 600 x 800 mm.
- Maximum loading capacity 150 kg.



## Hints and special features

Double-sided handrail in accordance with EN 131-7 on access optional.

Complies with EN 131-7

## Product features

Base <b>0,93 m × 1,81 m</b>	Coating <b>natural</b>	Connection Stile-Rung <b>welded</b>	Guardrail height <b>1000 mm</b>	Load capacity <b>max. 150 kg</b>
Material	Number of rungs, incl.	Pitch rung/tread	Platform height	Platform length



<b>Aluminium</b>	platform <b>6</b>	<b>240 mm</b>	<b>1.44 m</b>	<b>800 mm</b>
Platform width <b>600 mm</b>	Standards <b>EN 131-7</b>	Transport dimensions <b>1.850 mm × 1.000 mm × 330 mm</b>	Tread depth <b>200 mm</b>	Type rung/tread <b>serrated</b>
Warranty <b>10 years</b>	Weight <b>38.4 kg</b>	Working height <b>3.45 m</b>		