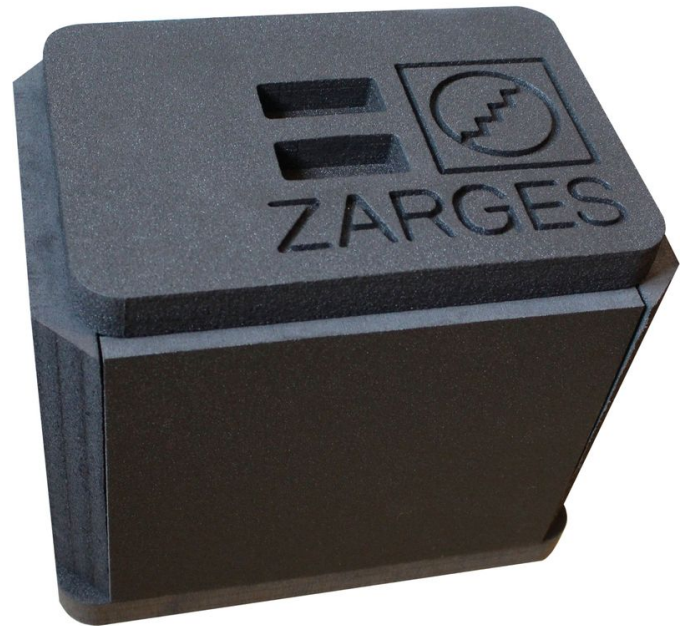




# Insulation insert - 43825

## Product description

- For temperature-controlled transport, e.g. in combination with ice packs or dry ice.
- Suitable for K 470 with inside dimensions 350 x 250 x 310 mm.
- 6-piece, wall thickness 30 mm.
- Easy self-installation by clamping. Removable for easy cleaning.



## Product features

<p>Dimensions</p> <p><b>350 mm × 250 mm × 310 mm</b></p>	<p>Internal dimensions L x W x H</p> <p><b>290 mm × 190 mm × 250 mm</b></p>	<p>Length</p> <p><b>350 mm</b></p>	<p>Suitable for</p> <p><b>Missing translation</b></p>	<p>Weight</p> <p><b>0.5 kg</b></p>
<p>Width</p> <p><b>250 mm</b></p>				