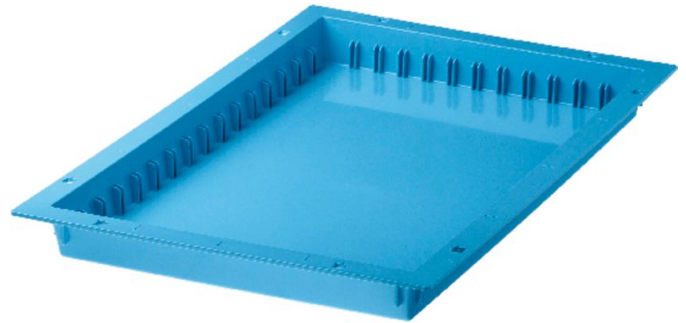




ABS modules and ABS modular baskets - 46011

Product description

- Made from acrylonitrile butadiene styrene (ABS), light blue.
- Modules and modular baskets are stackable and nestable.
- Capable of withstanding temperatures of up to 85°C.
- Sealed floor provides reliable protection against spilled liquids, dust and dirt particles.
- Simple mounting of label holders regardless of the position of the lengthwise and crosswise dividers.
- Can be subdivided as required, visual aid for positioning of dividers.
- Designed for fitting in a support wall and on telescopic rails and for drawer stop.



Product features

Description	Dimensions	Length	Weight	Width
ABS module	600 mm × 400 mm × 50 mm	600 mm	1 kg	400 mm