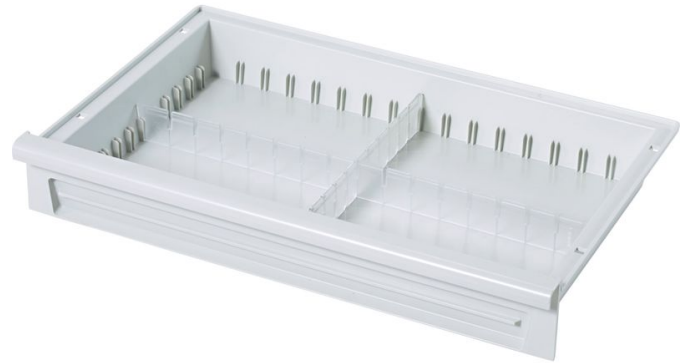




Modular drawers in ABS - 46206

Product description

- Made from acrylonitrile butadiene styrene (ABS), light grey.
- Capable of withstanding temperatures of up to 85°C.
- Sealed floor provides reliable protection against spilled liquids, dust and dirt particles.
- Can be subdivided as required using lengthwise and crosswise dividers.
- Designed for fitting in a support wall and on telescopic rails and for drawer stop.
- Designed for attachment of label holders.



Product features

Dimensions	Length	Weight	Width
600 mm × 400 mm × 245 mm	600 mm	2.1 kg	400 mm