



Wall bracket, rigid - 47301

Product description

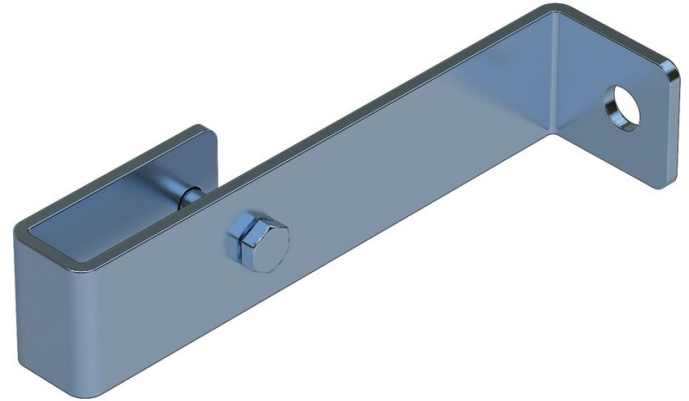
- For 150 mm stand-off.
- 1 set = 2 pieces.

Hints and special features

2 sets of wall brackets are required for ladders with 4–9 rungs, 3 sets of wall brackets for ladders with 10–15 rungs, 5 sets of wall brackets for ladders with 16–24 rungs.

1 set = 2 pieces (right/left).

Attachment materials (dowels etc.) are not included in the scope of delivery.



Product features

Material	Suitable for	Warranty	Weight
Galvanised steel	Steel ladder	10 years	0.8 kg