



# Wall bracket, adjustable - 47308

## Product description

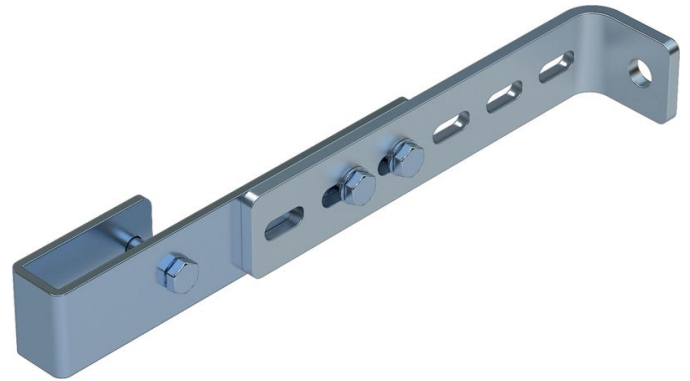
- Adjustable for wall clearances from 150 mm to 300 mm.
- 1 set = 2 pieces.

## Hints and special features

2 sets of wall brackets are required for ladders with 4–9 rungs, 3 sets of wall brackets for ladders with 10–15 rungs, 5 sets of wall brackets for ladders with 16–24 rungs.

1 set = 2 pieces (right/left).

Attachment materials (dowels etc.) are not included in the scope of delivery.



## Product features

|                        |                   |                 |               |
|------------------------|-------------------|-----------------|---------------|
| Material               | Suitable for      | Warranty        | Weight        |
| <b>Stainless steel</b> | <b>GRP ladder</b> | <b>10 years</b> | <b>1.6 kg</b> |