

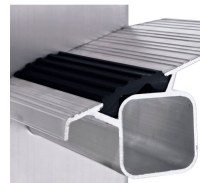


Saferstep S

Comfortable and safe ascent with high non-slip performance thanks to Safer Step Technology and robust, stable construction.

Product description

- Comfortable and safe ascent with high non-slip performance thanks to Safer Step Technology and robust, stable construction.
- Large platform that allows personnel to stand safely and comfortably even when working for extended periods.
- Practical tray with plenty of space for tools and small items.
- Tread with ZARGES Safer Step Technology, 80 mm deep.
- Abrasion-resistant, anodised stiles.
- Practical aluminium storage tray for small items and tools.
- Platform made from extruded aluminium (300 mm x 250 mm) for safe and comfortable standing even when working for longer periods of time.
- High-strength Perlon belts prevent splay, fitted on all models of 5 rungs or more.
- Maximum working heights thanks to 280mm high access.
- Replaceable 2-component plastic end caps ensure positioning without risk of slipping and at the same time provide firm seating in the stile.



Hints and special features

Complies with EN 131 Professional.

Product features

Coating anodised	Connection Stile-Rung flanged	Load capacity max. 150 kg	Material Aluminium	Pitch rung/tread 265 mm
----------------------------	---	-------------------------------------	------------------------------	-----------------------------------



Platform length 250 mm	Platform width 300 mm	Standards EN 131 professional	Stile depth 68 mm	Stile depth 48 mm
Stile depth steps/back stay 68mm / 48mm	Tray Aluminium	Tread depth 80 mm	Type rung/tread Safer Step	Warranty 10 years

Product variants

SKU 41373	SKU 41374	SKU 41375
Base 0,75 m × 0,49 m	Base 0,91 m × 0,52 m	Anti splay Belt strap
Number of rungs, incl. platform 3	Number of rungs, incl. platform 4	Base 1,08 m × 0,55 m
Overall base width 0.49 m	Overall base width 0.52 m	Number of rungs, incl. platform 5
Overall length 1.59 m	Overall length 1.87 m	Overall base width 0.55 m
Platform height 0.8 m	Platform height 1.06 m	Overall length 2.15 m
Transport dimensions approx. 1.600 mm × approx. 500 mm × 230 mm	Transport dimensions approx. 1.880 mm × approx. 520 mm × approx. 230 mm	Platform height 1.33 m
Weight 6.5 kg	Weight 7.6 kg	Transport dimensions approx. 2.160 mm × approx. 550 mm × approx. 230 mm
Working height 2.8 m	Working height 3.1 m	Weight 9 kg
		Working height



		3.35 m
SKU 41376	SKU 41377	SKU 41378
Anti splay Belt strap	Anti splay Belt strap	Anti splay Belt strap
Base 1,25 m × 0,58 m	Base 1,42 m × 0,61 m	Base 1,58 m × 0,64 m
Number of rungs, incl. platform 6	Number of rungs, incl. platform 7	Number of rungs, incl. platform 8
Overall base width 0.58 m	Overall base width 0.61 m	Overall base width 0.64 m
Overall length 2.43 m	Overall length 2.71 m	Overall length 2.99 m
Platform height 1.59 m	Platform height 1.85 m	Platform height 2.12 m
Transport dimensions approx. 2.430 mm × approx. 580 mm × 230 mm	Transport dimensions approx. 2.710 mm × approx. 610 mm × 230 mm	Transport dimensions approx. 2.990 mm × approx. 640 mm × 230 mm
Weight 9.9 kg	Weight 11.1 kg	Weight 12.3 kg
Working height 3.6 m	Working height 3.85 m	Working height 4.15 m
SKU 41380		
Anti splay Belt strap		
Base 1,91 m × 0,7 m		



Number of rungs, incl. platform

10

Overall base width

0.7 m

Overall length

3.55 m

Platform height

2.64 m

Transport dimensions

**approx. 3.550 mm × approx. 700
mm × 230 mm**

Weight

15.6 kg

Working height

4.65 m