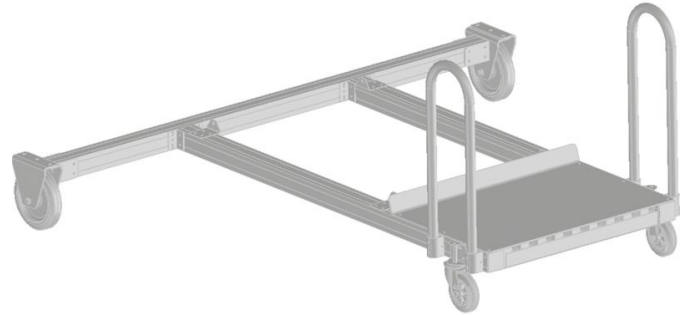




Mandatory module - chassis

Product description

- Two variants with sliding handles available:
- Standard chassis with rigid stabiliser. Mobile on 2 swivel and 2 braked fixed castors.
- Chassis with extendable height-adjustable stabiliser (adjustment range 200 mm) for optimum stability and levelling out uneven floor/ground surfaces. Mobile on 2 swivel and 2 braked fixed castors.



Product features

Product variants

SKU 591010	SKU 591011
Transport dimensions 2.370 mm × 2.335 mm × 1.025 mm	Transport dimensions 2.370 mm × 1.200 mm × 1.025 mm
Weight 243.7 kg	Version Chassis with extendable stabiliser suitable for fitting spindles
	Weight 279.6 kg