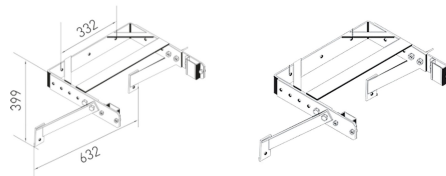
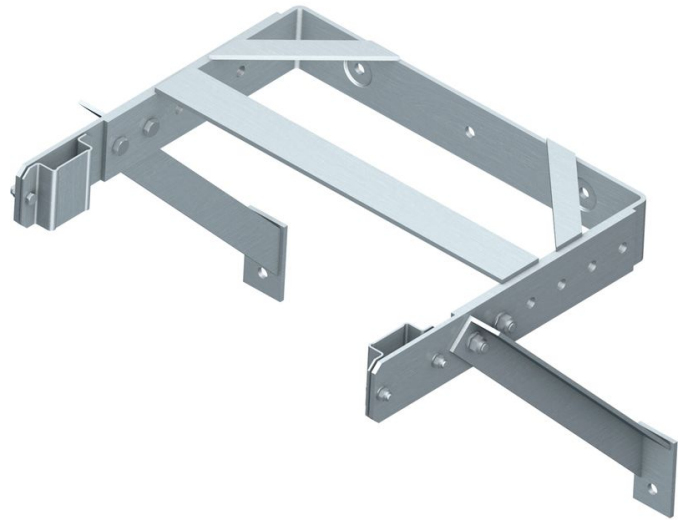




Adjustable wall bracket, U-shape

Product description

- Adjustable from 400 - 600 mm.
- Incl. transverse bracing and transverse support.
- Hole spacing, bar: 332 mm.
- Hole spacing, supports: 577 mm.
- Overall width, bar 622 mm.



Product features

Warranty	Weight
10 years	13.8 kg

Product variants

SKU	SKU
43260	44260
Material	Material
Galvanised steel	Stainless steel