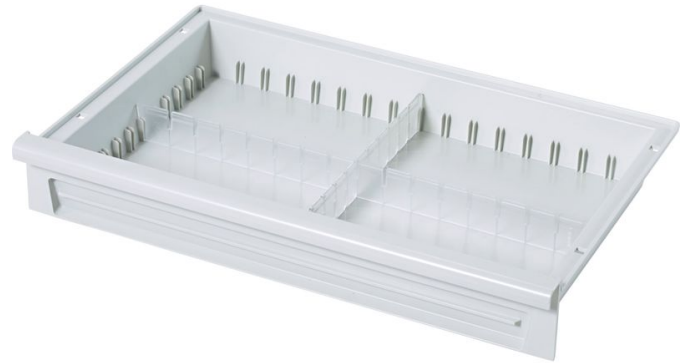




# Modular drawers in ABS

## Product description

- Made from acrylonitrile butadiene styrene (ABS), light grey.
- Capable of withstanding temperatures of up to 85°C.
- Sealed floor provides reliable protection against spilled liquids, dust and dirt particles.
- Can be subdivided as required using lengthwise and crosswise dividers.
- Designed for fitting in a support wall and on telescopic rails and for drawer stop.
- Designed for attachment of label holders.



## Product features

## Product variants

SKU <b>46206</b>	SKU <b>46205</b>	SKU <b>46209</b>
Dimensions <b>600 mm × 400 mm × 245 mm</b>	Dimensions <b>600 mm × 400 mm × 145 mm</b>	Dimensions <b>400 mm × 600 mm × 245 mm</b>
Length <b>600 mm</b>	Length <b>600 mm</b>	Length <b>400 mm</b>
Weight <b>2.1 kg</b>	Weight <b>1.8 kg</b>	Weight <b>2.1 kg</b>
Width <b>400 mm</b>	Width <b>400 mm</b>	Width <b>600 mm</b>
SKU <b>46208</b>	SKU <b>46204</b>	



Dimensions <b>400 mm × 600 mm × 145 mm</b>	Dimensions <b>600 mm × 400 mm × 95 mm</b>
Length <b>400 mm</b>	Length <b>600 mm</b>
Weight <b>1.8 kg</b>	Weight <b>1.7 kg</b>
Width <b>600 mm</b>	Width <b>400 mm</b>