

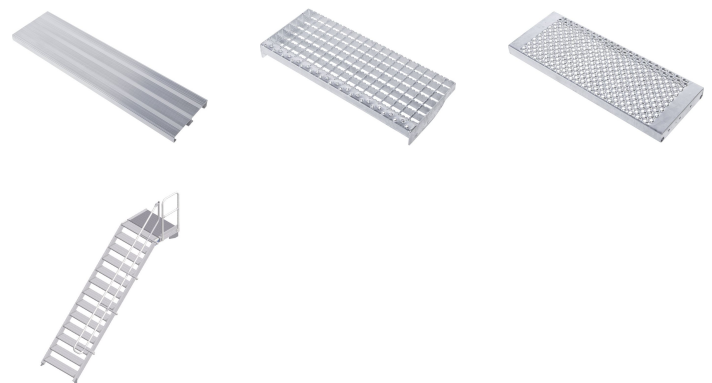
# Access steps with platform

## - 40155472

Stationary access to buildings and machines with platforms.

### Product description

- Different angles of inclination, 45° for comfortable access, 60° for confined spaces.
- Selection of tread widths 600 mm, 800 mm or 1000 mm.
- Serrated aluminium (R10) step and platform surfaces as standard. Also available as steel open grid (R12) and steel perforated plate (R13) for extra non-slip properties.
- Individually adjustable platform lengths.
- Support section mounting element for use as a free-standing work platform.
- Individual guardrail configuration on the platform, optionally with swing door or pole barrier.
- Maximum flexibility with optional handrails and guardrails which can be removed without tools.
- Stiles made from high-strength aluminium extrusions with screw channels for flexible assembly options.
- Quick and simple assembly with the ZARGES connection system with a high level of pre-assembly.



### Hints and special features

We recommend equipping the product in accordance with the German Equipment and Product Safety Act (ProdSG) with two-sided handrails and, for steps with platforms or maintenance platforms, all-round fall protection (e.g. guardrails). If handrails or guardrails are not desired, the operator must ensure sufficient regulatory protection.

Standard applied: DIN EN ISO 14122.

## Product features

Inclination <b>45 °</b>	Load capacity <b>max. 300 kg</b>	Max. load per tread <b>150 kg</b>	Number of treads <b>13</b>	Overall span <b>3451 mm</b>
Platform length <b>600 mm</b>	Standards <b>NF EN ISO 14122-4</b>	Tread width <b>1000 mm</b>	Vertical height <b>2790 mm</b>	Warranty <b>10 years</b>