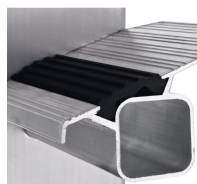


Everest Plus 2E - 40467

Better footing at the top. The push-up ladder with 80 mm deep treads instead of rungs.

Product description

- Provides a safe place to stand for work at height.
The push-up ladder with treads instead of rungs.
- Particularly light thanks to the combination of stepladder and rung ladder (hybrid design).
- The upper ladder is fitted with plastic wheels to prevent damage to walls.
- Height adjustment in increments of 280 mm.
- Upper ladder fitted with plastic wall wheels.
- Locks safely by means of hooks with lift-off retainer.
- Ladder width: 420 mm.
- Stiles and guide fittings of extruded aluminium sections for maximum safety.
- Replaceable 2-component plastic end caps ensure secure positioning without the risk of slipping.



Hints and special features

Complies with EN 131 Professional.

Product features

Coating natural	Connection Stile-Rung flanged	External width of lower ladder 420 mm	Load capacity max. 150 kg	Material Aluminium
Number of rungs	Number of rungs	Overall length, extended	Overall length, retracted	Pitch rung/tread



8	2 × 8	4.2 m	2.52 m	265 mm
Standards EN 131 professional	Stile depth 73 mm	Transport dimensions approx. 2.520 mm × approx. 420 mm × approx. 200 mm	Warranty 10 years	Weight 11.5 kg
Wheels Rubber	Wide crosspiece 0.9 m	Working height 4.9 m		