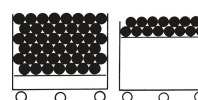
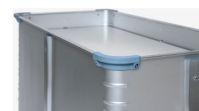


Spring floor trolley W 162 - 40749

The new ZARGES W 162 spring-loaded trolley - the best in its class! Central spring with the perfect spring force for any size, payload up to 150 kg, particularly stable and durable.

Product description

- Trolley with vertically movable floor and defined spring force.
- For ergonomic working without bending down - the movable floor always keeps the load at the same height.
- No abrasion due to anodized aluminum.
- Castors arranged centrally for easy manoeuvring, even in the most confined spaces.
- Up to 150 kg payload possible.
- Extensive range of accessories available.



Product features

Chassis arrangement can be changed Yes	Corner beading Yes	Formation Chassis 2 swivel and 2 fixed castors in center arrangement	Internal dimensions L x W x H 1.010 mm × 650 mm × 457 mm	Load capacity max. 150 kg
Material	Outside dimensions max. L x W x H	Spring force	Volume	Warranty



ZARGES

Anodised aluminium	1.058 mm × 698 mm × 811 mm	45 kg	300 l	10 years
Weight	Wheel diameter	Wheel diameter		
29 kg	125 mm	40 mm		