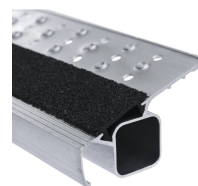


## R13step S - 41642

Safer ascent with the highest non-slip performance thanks to R13 treads for oily and wet environment.

### Product description

- Safer ascent with the highest non-slip performance thanks to R13 treads for oily and wet environment.
- Large platform with R13 surface that allows personnel to stand safely and comfortably even when working for extended periods.
- Practical tray with plenty of space for tools and small items.
- 80 mm deep treads with R13 surface and perforations to drain fast.
- Abrasion-resistant, anodised stiles.
- Practical aluminium storage tray for small items and tools.
- Platform made from extruded aluminium (300 mm × 250 mm) with R13 surface for safer and comfortable standing even when working for longer periods of time.
- High-strength perlon belts prevent splay.
- Maximum working heights thanks to 280mm high access.
- Replaceable 2-component plastic end caps ensure positioning without risk of slipping and at the same time provide firm seating in the stile.



### Hints and special features

Platform and treads with R13 surface.

Complies with EN 131 Professional.

## Product features

Anti splay <b>Belt strap</b>	Base <b>1,91 m × 0,71 m</b>	Coating <b>anodised</b>	Connection Stile-Rung <b>flanged</b>	Load capacity <b>max. 150 kg</b>
Material <b>Aluminium</b>	Number of rungs, incl. platform <b>10</b>	Overall base width <b>0.71 m</b>	Overall length <b>3.55 m</b>	Pitch rung/tread <b>265 mm</b>
Platform height <b>2.64 m</b>	Platform length <b>250 mm</b>	Platform width <b>300 mm</b>	Standards <b>EN 131 professional</b>	Stile depth <b>73 mm</b>
Stile depth <b>58 mm</b>	Stile depth steps/back stay <b>73mm / 58mm</b>	Transport dimensions <b>approx. 3.550 mm × approx. 710 mm × approx. 170 mm</b>	Tray <b>Aluminium</b>	Tread depth <b>80 mm</b>
Type rung/tread <b>R13 tread</b>	Warranty <b>10 years</b>	Weight <b>16.1 kg</b>	Working height <b>4.65 m</b>	