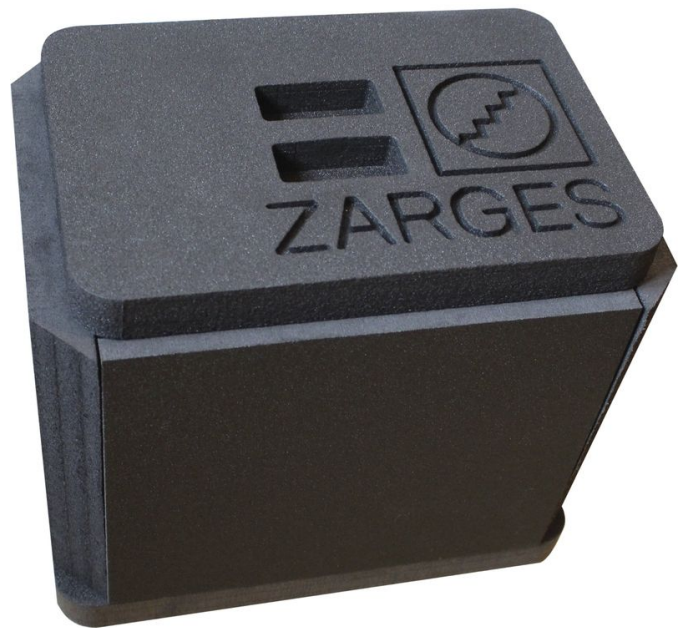


Insulation insert - 43825

Product description

- For temperature-controlled transport, e.g. in combination with ice packs or dry ice.
- Suitable for K 470 with inside dimensions 350 x 250 x 310 mm.
- 6-piece, wall thickness 30 mm.
- Easy self-installation by clamping. Removable for easy cleaning.



Product features

Dimensions	350 mm × 250 mm × 310 mm
Internal dimensions L x W x H	290 mm × 190 mm × 250 mm
Length	350 mm
Suitable for	Missing translation
Weight	0.5 kg
Width	250 mm

ZARGES GmbH

Zargesstraße 7

82362 Weilheim

Tel: +49 (0)881-687-100

Fax: +49 (0)881-687-500

zarges@zarges.de

www.zarges.com

Effective 6/28/2026

Subject to change or error.