

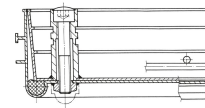
Aluminium shaft covers

with cover trough - 47000

Shaft covers that can be walked or driven on, with customisable inner and outer surface.

Product description

- Compliant with DIN EN 124 in conjunction with DIN 1229.
- Tapering section design, therefore easy to open. No sticking.
- Easy to open, no jamming.
- Odour-tight and impervious to surface water.
- Load with choice of surface: test force 125 kN (=12.5 t), only after cover trough has been filled by customer with B 45 concrete (grain 0-8).
- Incl. lift-out handles (pair) made from stainless steel, comprising one self-lifting opening handle and one lift-out handle.
- Trough depth 60 mm (of which 40 mm covered with construction steel grating and 20 mm free area)



Product features

Design height 80 mm	Inside shaft length 300 mm	Inside shaft size 300mm × 300mm	Inside shaft width 300 mm	Material, cover Aluminium
Material, frame Aluminium	Outside dimensions max. L x W x H 440 mm × 440 mm	Transport dimensions 440 mm × 440 mm × 70 mm	Trough depth 60 mm	