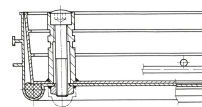


# Aluminium shaft covers with cover trough - 47001

Shaft covers that can be walked or driven on, with customisable inner and outer surface.

## Product description

- Compliant with DIN EN 124 in conjunction with DIN 1229.
- Tapering section design, therefore easy to open. No sticking.
- Easy to open, no jamming.
- Odour-tight and impervious to surface water.
- Load with choice of surface: test force 125 kN (=12.5 t), only after cover trough has been filled by customer with B 45 concrete (grain 0-8).
- Incl. lift-out handles (pair) made from stainless steel, comprising one self-lifting opening handle and one lift-out handle.
- Trough depth 60 mm (of which 40 mm covered with construction steel grating and 20 mm free area)



## Product features

Design height <b>80 mm</b>	Inside shaft length <b>450 mm</b>	Inside shaft size <b>450mm × 450mm</b>	Inside shaft width <b>450 mm</b>	Material, cover <b>Aluminium</b>
Material, frame <b>Aluminium</b>	Outside dimensions max. L x W x H <b>590 mm × 590 mm</b>	Transport dimensions <b>590 mm × 590 mm × 70 mm</b>	Trough depth <b>60 mm</b>	