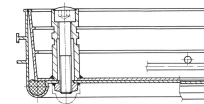


# Aluminium shaft covers with cover trough - 47002

Shaft covers that can be walked or driven on, with customisable inner and outer surface.

## Product description

- Compliant with DIN EN 124 in conjunction with DIN 1229.
- Tapering section design, therefore easy to open. No sticking.
- Easy to open, no jamming.
- Odour-tight and impervious to surface water.
- Load with choice of surface: test force 125 kN (=12.5 t), only after cover trough has been filled by customer with B 45 concrete (grain 0-8).
- Incl. lift-out handles (pair) made from stainless steel, comprising one self-lifting opening handle and one lift-out handle.
- Trough depth 60 mm (of which 40 mm covered with construction steel grating and 20 mm free area)



## Product features

Design height	80 mm
Inside shaft length	500 mm
Inside shaft size	500mm × 500mm
Inside shaft width	500 mm
Material, cover	Aluminium



Material, frame

Aluminium

Outside dimensions max. L x W x H

640 mm x 640 mm

Transport dimensions

640 mm x 640 mm x 70 mm

Trough depth

60 mm

ZARGES GmbH

Zargesstraße 7

82362 Weilheim

Tel: +49 (0)881-687-100

Fax: +49 (0)881-687-500

zarges@zarges.de

[www.zarges.com](http://www.zarges.com)

Effective 5/22/2026

Subject to change or error.