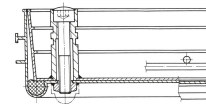


Aluminium shaft covers with cover trough - 47010

Shaft covers that can be walked or driven on, with customisable inner and outer surface.

Product description

- Compliant with DIN EN 124 in conjunction with DIN 1229.
- Tapering section design, therefore easy to open. No sticking.
- Easy to open, no jamming.
- Odour-tight and impervious to surface water.
- Load with choice of surface: test force 125 kN (=12.5 t), only after cover trough has been filled by customer with B 45 concrete (grain 0-8).
- Incl. lift-out handles (pair) made from stainless steel, comprising one self-lifting opening handle and one lift-out handle.
- Trough depth 60 mm (of which 40 mm covered with construction steel grating and 20 mm free area)



Product features

Design height	80 mm
Inside shaft length	1000 mm
Inside shaft size	1.000mm × 1.000mm
Inside shaft width	1000 mm
Material, cover	Aluminium



Material, frame

Aluminium

Outside dimensions max. L x W x H

1.140 mm × 1.140 mm

Transport dimensions

1.140 mm × 1.140 mm × 70 mm

Trough depth

60 mm

ZARGES GmbH

Zargesstraße 7

82362 Weilheim

Tel: +49 (0)881-687-100

Fax: +49 (0)881-687-500

zarges@zarges.de

www.zarges.com

Effective 4/2/2026

Subject to change or error.