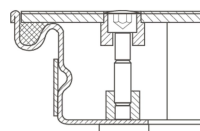


Aluminium shaft covers with cover plate - 47024

Shaft covers that can be walked on, with cover plate, for indoor use.

Product description

- Compliant with DIN EN 124 in conjunction with DIN 1229.
- Tapering section design, therefore easy to open. No sticking.
- Easy to open, no jamming.
- EPDM seal (petrol-resistant seal available on request).
- Odour-tight and impervious to surface water.
- Load with cover plate: test force 15 kN (=1.5 t).
- Incl. lift-out handles (pair) made from stainless steel, comprising one self-lifting opening handle and one lift-out handle.



Product features

Design height	63 mm
Inside shaft length	1000 mm
Inside shaft size	1.000mm × 1.000mm
Inside shaft width	1000 mm
Material, frame	Steel, galvanised
Outside dimensions max. L x W x H	1.160 mm × 1.160 mm
Transport dimensions	1.160 mm × 1.160 mm × 70 mm



ZARGES

ZARGES GmbH

Zargesstraße 7

82362 Weilheim

Tel: +49 (0)881-687-100

Fax: +49 (0)881-687-500

zarges@zarges.de

www.zarges.com

Effective 5/27/2026

Subject to change or error.