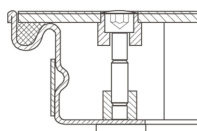


# Galvanised steel shaft covers with cover plate - 47051

Shaft covers that can be walked on, with cover plate, for indoor use.

## Product description

- Compliant with DIN EN 124 in conjunction with DIN 1229.
- Tapering section design, therefore easy to open. No sticking.
- Easy to open, no jamming.
- EPDM seal (petrol-resistant seal available on request).
- Odour-tight and impervious to surface water.
- Load with cover plate: test force 15 kN (=1.5 t).
- Incl. lift-out handles (pair) made from stainless steel, comprising one self-lifting opening handle and one lift-out handle.



## Product features

Design height <b>63 mm</b>	Inside shaft length <b>600 mm</b>	Inside shaft size <b>600mm × 600mm</b>	Inside shaft width <b>600 mm</b>	Material, frame <b>Steel, galvanised</b>
Outside dimensions max. L x W x H <b>760 mm × 760 mm</b>	Transport dimensions <b>760 mm × 760 mm × 70 mm</b>			