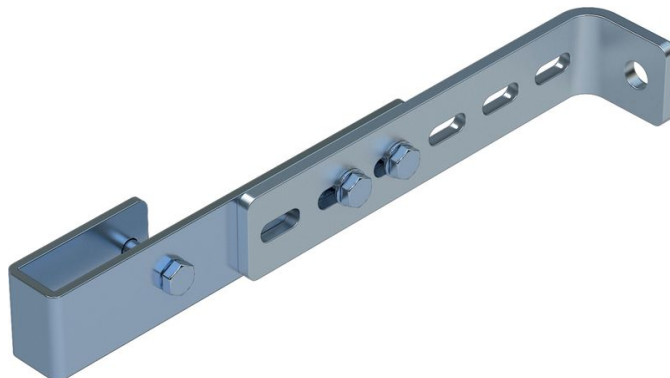


Wall bracket, adjustable - 47308

Product description

- Adjustable for wall clearances from 150 mm to 300 mm.
- 1 set = 2 pieces.



Hints and special features

2 sets of wall brackets are required for ladders with 4–9 rungs, 3 sets of wall brackets for ladders with 10–15 rungs, 5 sets of wall brackets for ladders with 16–24 rungs.

1 set = 2 pieces (right/left).

Attachment materials (dowels etc.) are not included in the scope of delivery.

Product features

| | | | |
|------------------------|-------------------|-----------------|---------------|
| Material | Suitable for | Warranty | Weight |
| Stainless steel | GRP ladder | 10 years | 1.6 kg |