

Wall bracket, adjustable - 47612

Product description

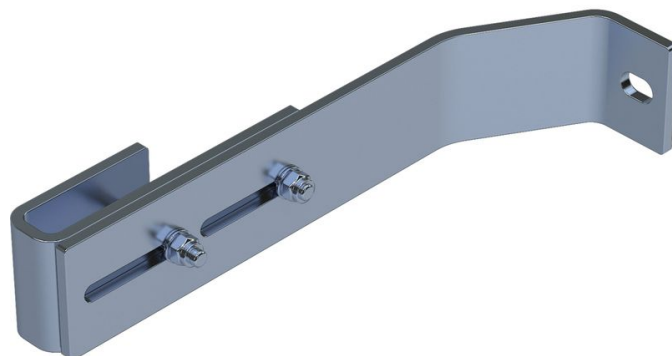
- Adjustable for wall clearances from 280 to 330 mm.
- 1 set = 2 pieces.

Hints and special features

2 sets of wall brackets are required for ladders with 4–9 rungs, 3 sets of wall brackets for ladders with 10–15 rungs, 5 sets of wall brackets for ladders with 16–24 rungs.

1 set = 2 pieces (right/left).

Attachment materials (dowels etc.) are not included in the scope of delivery.



Product features

Material	Suitable for	Warranty	Weight
Stainless steel	V4A ladder	10 years	1.8 kg