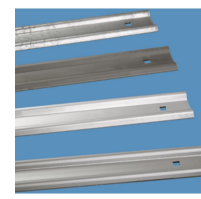


Multi-section fixed ladder systems, natural aluminium - 58668

Multi-section access solution with crossover platform for buildings and machinery.

Product description

- For permanent installation to BGV D 36 and DIN 18 799-1, DIN 14 094-1 and EN ISO 14 122-4.
- With back guards.
- Ladder width: 520 mm.
- Wall brackets with various wall distances up to 600 mm can be selected.
- The distance between the wall brackets is max. 2.00 m. But each ladder section must be mounted with at least 2 wall brackets.
- Safety barriers, access protection and platforms can be selected to suit individual requirements.
- On request, we can also produce fixed-ladders that differ from the standard specifications.



Hints and special features

Dowels and screws/bolts for wall mounting are not included in the scope of delivery.

The prices for double-section systems listed below are calculated as follows: Wall bracket in the form of a U-bar, 200 mm rigid, straight stile extensions on both sides, crossover platform, incl. back cage in accordance with DIN 18 799-1. In the case of other requirements, please use our planning system for

fixed ladders.

Product features

Material	Natural aluminium
Overall length incl. stile	17.9 m
Warranty	10 years
access height	16.8 m

ZARGES GmbH

Zargesstraße 7

82362 Weilheim

Tel: +49 (0)881-687-100

Fax: +49 (0)881-687-500

zarges@zarges.de

www.zarges.com

Effective 5/3/2026

Subject to change or error.