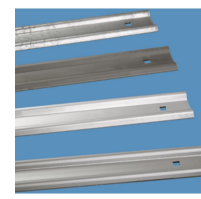


# Multi-section fixed ladder systems, V4A stainless steel - 58857

Multi-section access solution with crossover platform for buildings and machinery.

## Product description

- For permanent installation to BGV D 36 and DIN 18 799-1, DIN 14 094-1 and EN ISO 14 122-4.
- With back guards.
- Ladder width: 520 mm.
- Wall brackets with various wall distances up to 600 mm can be selected.
- The distance between the wall brackets is max. 2.00 m. But each ladder section must be mounted with at least 2 wall brackets.
- Material: Stainless steel, 1.4571 (AISI 316 Ti) in accordance with EN 10088-2, corrosion class C4
- Safety barriers, access protection and platforms can be selected to suit individual requirements.
- On request, we can also produce fixed-ladders that differ from the standard specifications.



## Hints and special features

Dowels and screws/bolts for wall mounting are not included in the scope of delivery.

The prices for double-section systems listed below are calculated as follows: Wall bracket in the form of a U-bar, 200 mm rigid, straight stile extensions on both sides, crossover platform, incl. back cage in

accordance with DIN 18 799-1. In the case of other requirements, please use our planning system for fixed ladders.

## Product features

Material	stainless steel
Overall length incl. stile	16.8 m
Warranty	10 years
access height	15.7 m

ZARGES GmbH

Zargesstraße 7

82362 Weilheim

Tel: +49 (0)881-687-100

Fax: +49 (0)881-687-500

[zarges@zarges.de](mailto:zarges@zarges.de)

[www.zarges.com](http://www.zarges.com)

Effective 6/17/2026

Subject to change or error.