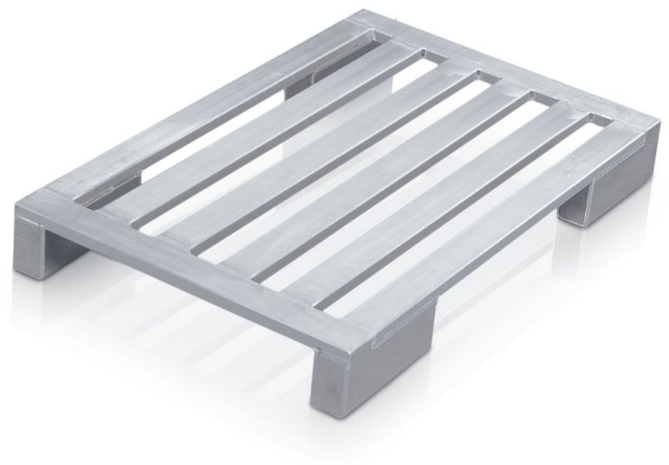


Aluminium flat pallet with long corner feet

Hygienic pallet, sturdy and suitable for use on roller conveyors.

Product description

- Hygienic pallet, sturdy and suitable for use on roller conveyors.
- Frame and longitudinal members made of sealed, heavy-duty, corrosion-resistant aluminium sections.
- Extra-long corner feet (L = 300 mm) combine the advantages of skid undercarriage and corner feet. They are for example suitable for roller conveyors and high bay warehouses.
- Plenty of space to accommodate forklift arms. No full-length skid to get in the way, hence less risk of damage.
- Seams welded watertight.



Product features

Length	Load capacity	Material
1200 mm	1000 kg	Aluminium

Product variants

SKU	SKU
45175	45185



Dimensions 1.200 mm × 800 mm × 150 mm	Dimensions 1.200 mm × 1.000 mm × 150 mm
Number of rungs 4	Number of rungs 5
Weight 12.3 kg	Weight 13.9 kg
Width 800 mm	Width 1000 mm