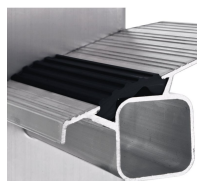


Saferstep L

The high non-slip performance of Safer Step Technology makes for comfortable and safe use, while the anodised stiles are wear-resistant and pleasant to hold.

Product description

- The high non-slip performance of Safer Step Technology makes for comfortable and safe use, while the anodised stiles are wear-resistant and pleasant to hold.
- Also available as a shelf-ladder.
- Tread with ZARGES Safer Step Technology, 80 mm deep.
- Abrasion-resistant, anodised stiles.
- Overall width: 420 mm.
- High strength, non-twist rung/stile connections.
- Treads and stiles made from extruded aluminium sections.
- Replaceable 2-component plastic end caps ensure secure positioning without the risk of slipping.



Hints and special features

Complies with EN 131 Professional.

Product features

| | | | | |
|----------------------------|---|-------------------------------------|------------------------------|-----------------------------------|
| Coating anodised | Connection Stile-Rung flanged | Load capacity max. 150 kg | Material Aluminium | Pitch rung/tread 265 mm |
|----------------------------|---|-------------------------------------|------------------------------|-----------------------------------|

| | | | | |
|--------------------------------|--------------|--------------|-------------------|-----------------|
| Standards | Stile depth | Tread depth | Type rung/tread | Warranty |
| EN 131 professional | 68 mm | 80 mm | Safer Step | 10 years |
| certification-mark-pf | | | | |
| TÜV-SÜD | | | | |

Product variants

| | | |
|--|--|--|
| SKU | SKU | SKU |
| 41356 | 41358 | 41360 |
| Number of treads | Number of treads | Number of treads |
| 6 | 8 | 10 |
| Overall length | Overall length | Overall length |
| 1.94 m | 2.5 m | 3.06 m |
| Transport dimensions | Transport dimensions | Transport dimensions |
| 1.930 mm × 420 mm × approx. 80 mm | 2.490 mm × 420 mm × approx. 80 mm | 3.050 mm × 420 mm × approx. 80 mm |
| Weight | Weight | Weight |
| 5 kg | 6.5 kg | 8.8 kg |
| Working height | Working height | Wide crosspiece |
| 2.8 m | 3.35 m | 0.8 m |
| | | Working height |
| | | 3.85 m |
| SKU | SKU | SKU |
| 41362 | 41364 | 41366 |
| Number of treads | Number of treads | Number of treads |
| 12 | 14 | 16 |

| | | |
|--|--|--|
| Overall length | Overall length | Overall length |
| 3.62 m | 4.18 m | 4.74 m |
| Transport dimensions | Transport dimensions | Transport dimensions |
| 3.610 mm × 420 mm × approx. 80 mm | 4.170 mm × 420 mm × approx. 80 mm | 4.730 mm × 420 mm × approx. 80 mm |
| Weight | Weight | Weight |
| 10.3 kg | 11.8 kg | 13.3 kg |
| Wide crosspiece | Wide crosspiece | Wide crosspiece |
| 0.8 m | 0.89 m | 0.89 m |
| Working height | Working height | Working height |
| 4.4 m | 4.9 m | 5.45 m |