

Wall bracket, adjustable

Product description

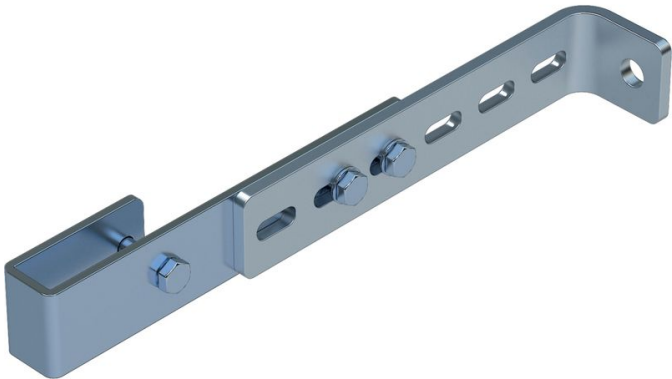
- Adjustable for wall clearances from 150 mm to 300 mm.
- 1 set = 2 pieces.

Hints and special features

2 sets of wall brackets are required for ladders with 4–9 rungs, 3 sets of wall brackets for ladders with 10–15 rungs, 5 sets of wall brackets for ladders with 16–24 rungs.

1 set = 2 pieces (right/left).

Attachment materials (dowels etc.) are not included in the scope of delivery.



Product features

Warranty	Weight
10 years	1.6 kg

Product variants

SKU	SKU	SKU
47302	47305	47308
Material	Material	Material
Galvanised steel	Stainless steel	Stainless steel
Suitable for	Suitable for	Suitable for

Steel ladder

V4A ladder

GRP ladder