

Wall bracket, adjustable

Product description

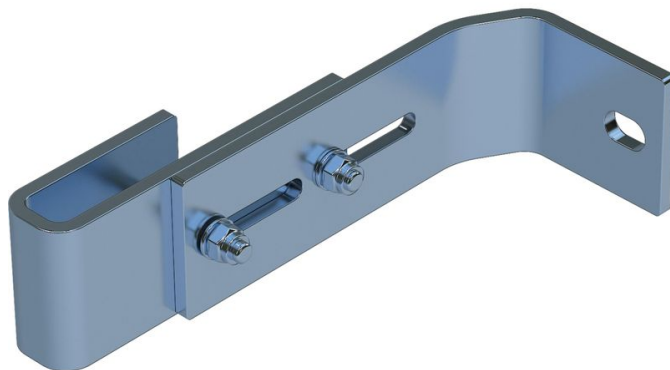
- Adjustable for wall clearances from 150 mm to 190 mm.
- 1 set = 2 pieces.

Hints and special features

2 sets of wall brackets are required for ladders with 4–9 rungs, 3 sets of wall brackets for ladders with 10–15 rungs, 5 sets of wall brackets for ladders with 16–24 rungs.

1 set = 2 pieces (right/left).

Attachment materials (dowels etc.) are not included in the scope of delivery.



Product features

Warranty

10 years

Weight

0.9 kg

Product variants

SKU	SKU	SKU
47314	47315	47316
Material	Material	Material
Galvanised steel	Stainless steel	Stainless steel
Suitable for	Suitable for	Suitable for

Steel ladder

V4A ladder

GRP ladder