

Wall bracket, adjustable

Product description

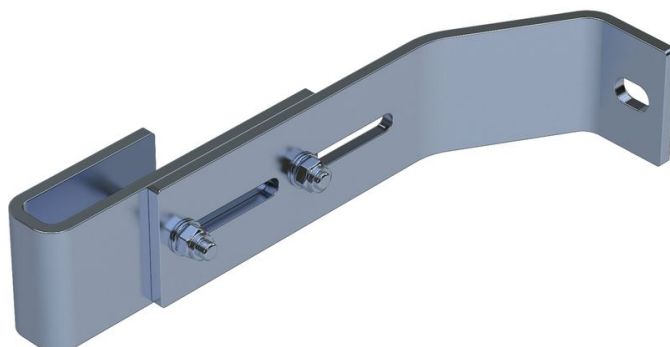
- Adjustable for wall clearances from 200 to 250 mm.
- 1 set = 2 pieces.

Hints and special features

2 sets of wall brackets are required for ladders with 4–9 rungs, 3 sets of wall brackets for ladders with 10–15 rungs, 5 sets of wall brackets for ladders with 16–24 rungs.

1 set = 2 pieces (right/left).

Attachment materials (dowels etc.) are not included in the scope of delivery.



Product features

Material	Warranty	Weight
Stainless steel	10 years	1.6 kg

Product variants

SKU	SKU
47610	47611
Suitable for	Suitable for
V4A ladder	GRP ladder