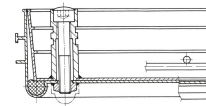


Aluminium shaft covers with cover trough

Shaft covers that can be walked or driven on, with customisable inner and outer surface.

Product description

- Compliant with DIN EN 124 in conjunction with DIN 1229.
- Tapering section design, therefore easy to open. No sticking.
- Easy to open, no jamming.
- Odour-tight and impervious to surface water.
- Load with choice of surface: test force 125 kN (=12.5 t), only after cover trough has been filled by customer with B 45 concrete (grain 0-8).
- Incl. lift-out handles (pair) made from stainless steel, comprising one self-lifting opening handle and one lift-out handle.
- Trough depth 60 mm (of which 40 mm covered with construction steel grating and 20 mm free area)



Product features

Design height	80 mm
Material, cover	Aluminium
Material, frame	Aluminium
Trough depth	60 mm

Product variants



	47000	47001	47002	47004	47005	47007
Inside shaft length	300 mm	450 mm	500 mm	600 mm	635 mm	800 mm
Inside shaft size	300mm x 300mm	450mm x 450mm	500mm x 500mm	600mm x 600mm	635mm x 635mm	800mm x 800mm
Inside shaft width	300 mm	450 mm	500 mm	600 mm	635 mm	800 mm
Outside dimensions max. L x W x H	440 mm x 440 mm	590 mm x 590 mm	640 mm x 640 mm	740 mm x 740 mm	775 mm x 775 mm	940 mm x 940 mm
Transport dimensions	440 mm x 440 mm x 70 mm	590 mm x 590 mm x 70 mm	640 mm x 640 mm x 70 mm	740 mm x 740 mm x 70 mm	770 mm x 770 mm x 70 mm	940 mm x 940 mm x 70 mm

	47010
Inside shaft length	1000 mm
Inside shaft size	1.000mm x 1.000mm
Inside shaft width	1000 mm
Outside dimensions max. L x W x H	1.140 mm x 1.140 mm
Transport dimensions	1.140 mm x 1.140 mm x 70 mm

ZARGES GmbH	Tel: +49 (0)881-687-100	www.zarges.com
Zargesstraße 7	Fax: +49 (0)881-687-500	Effective 6/28/2026
82362 Weilheim	zarges@zarges.de	Subject to change or error.