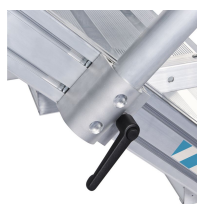


# Access steps - 40055264

Stationary access to buildings and machines.

## Product description

- Different angles of inclination: 45° for comfortable access, 60° for confined spaces.
- Selection of tread widths 600 mm, 800 mm or 1000 mm.
- Serrated aluminium (R10) step and platform surfaces as standard. Steel gratings (R12) and perforated steel plates (R13) are also available for higher non-slip performance.
- Maximum flexibility with optional handrails and guardrails which can be removed without tools.
- Stiles made from high-strength aluminium extrusions with screw channels for flexible assembly options.
- Quick and simple assembly with the ZARGES connection system with a high level of pre-assembly.
- Hook-on cantilevers, set of hooks and support bracket to integrate the product as detachable in a fixing.
- Plastic support plate for floor bracket for fast removal of product.
- Standard applied: DIN EN ISO 14 122.



## Hints and special features

We recommend equipping the product in accordance



with the German Equipment and Product Safety Act (ProdSG) with two-sided handrails and, for steps with platforms or maintenance platforms, all-round fall protection (e.g. guardrails). If handrails or guardrails are not desired, the operator must ensure sufficient regulatory protection.

Standard applied: DIN EN ISO 14 122.

## Product features

Inclination <b>45 °</b>	Load capacity <b>max. 300 kg</b>	Max. load per tread <b>150 kg</b>	Number of treads <b>5</b>	Overall span <b>1117 mm</b>
Standards <b>NF EN ISO 14122-4</b>	Tread width <b>800 mm</b>	Vertical height <b>1070 mm</b>	Warranty <b>10 years</b>	