

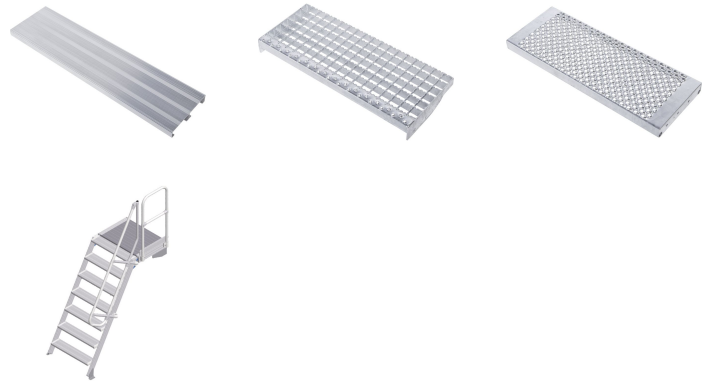


Access steps with landing - 40155386

Stationary access to buildings and machines with platforms.

Product description

- Different angles of inclination: 45° for comfortable access, 60° for confined spaces.
- Selection of tread widths 600 mm, 800 mm or 1000 mm.
- Treads and platform surfaces are made of grooved aluminum (R10) as standard.
- Stationary access to buildings and machines.
- Individually adjustable platform lengths.
- Support section mounting element for use as a free-standing work platform.
- Customised guardrail configuration on the platform, with optional swing door or pole barrier.
- Maximum flexibility with optional handrails and guardrails which can be removed without tools.
- Stiles made from high-strength aluminium extrusions with screw channels for flexible assembly options.
- Quick and simple assembly with the ZARGES connection system with a high level of pre-assembly.



Hints and special features

We recommend equipping the product in accordance with the German Equipment and Product Safety Act



(ProdSG) with two-sided handrails and, for steps with platforms or maintenance platforms, all-round fall protection (e.g. guardrails). If handrails or guardrails are not desired, the operator must ensure sufficient regulatory protection.

Design your custom staircase at www.zargeskonfigurator.de. Can't find the solution you're looking for? Contact our expert advisors! We can handle even the most challenging requirements!

Tel.: +49 881 687-101

Standard applied: DIN EN ISO 14 122.

Product features

| | |
|---------------------|-------------------|
| Inclination | 60 ° |
| Load capacity | max. 300 kg |
| Max. load per tread | 150 kg |
| Number of treads | 7 |
| Overall span | 1695 mm |
| Platform length | 600 mm |
| Standards | NF EN ISO 14122-4 |
| Tread width | 800 mm |
| Vertical height | 1750 mm |
| Warranty | 10 years |

ZARGES (U.K.) Ltd.

8 Holdom Avenue. Saxon Park Ind. Est.

Bletchley MK1 1QU

Tel: 01908 641118

Fax:
sales@zarges.co.uk

www.zarges.com/uk

Effective 13/5/2026
 Subject to change or error.