

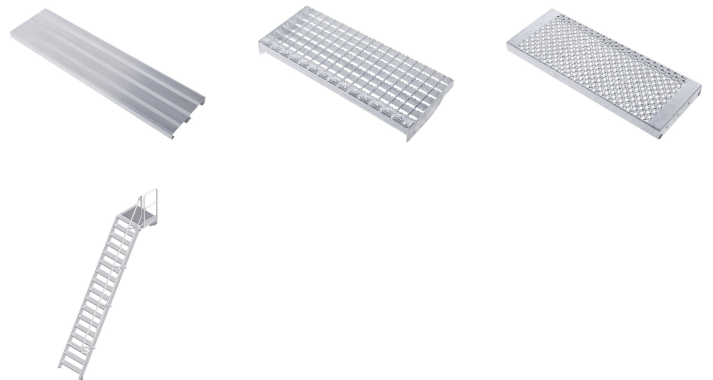


# Access steps with landing - 40155396

Stationary access to buildings and machines with platforms.

## Product description

- Different angles of inclination: 45° for comfortable access, 60° for confined spaces.
- Selection of tread widths 600 mm, 800 mm or 1000 mm.
- Treads and platform surfaces are made of grooved aluminum (R10) as standard.
- Stationary access to buildings and machines.
- Individually adjustable platform lengths.
- Support section mounting element for use as a free-standing work platform.
- Customised guardrail configuration on the platform, with optional swing door or pole barrier.
- Maximum flexibility with optional handrails and guardrails which can be removed without tools.
- Stiles made from high-strength aluminium extrusions with screw channels for flexible assembly options.
- Quick and simple assembly with the ZARGES connection system with a high level of pre-assembly.



## Hints and special features

We recommend equipping the product in accordance with the German Equipment and Product Safety Act



(ProdSG) with two-sided handrails and, for steps with platforms or maintenance platforms, all-round fall protection (e.g. guardrails). If handrails or guardrails are not desired, the operator must ensure sufficient regulatory protection.

Design your custom staircase at [www.zargeskonfigurator.de](http://www.zargeskonfigurator.de). Can't find the solution you're looking for? Contact our expert advisors! We can handle even the most challenging requirements!

Tel.: +49 881 687-101

Standard applied: DIN EN ISO 14 122.

## Product features

Inclination	60 °
Load capacity	max. 300 kg
Max. load per tread	150 kg
Number of treads	17
Overall span	3139 mm
Platform length	600 mm
Standards	NF EN ISO 14122-4
Tread width	800 mm
Vertical height	4250 mm
Warranty	10 years

ZARGES (U.K.) Ltd.

8 Holdom Avenue. Saxon Park Ind. Est.

Bletchley MK1 1QU

Tel: 01908 641118

Fax:  
[sales@zarges.co.uk](mailto:sales@zarges.co.uk)

[www.zarges.com/uk](http://www.zarges.com/uk)

Effective 13/5/2026  
 Subject to change or error.