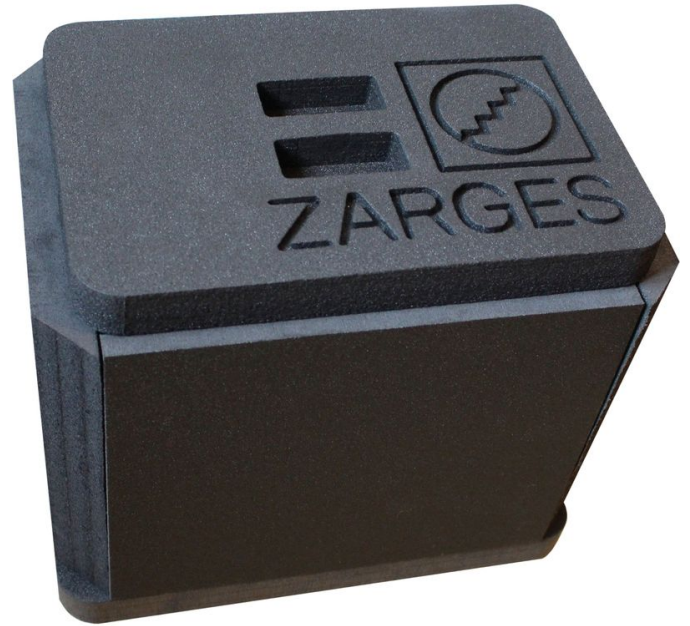




Insulation insert - 43825

Product description

- For temperature-controlled transport, e.g. in combination with ice packs or dry ice.
- Suitable for K 470 with inside dimensions 350 x 250 x 310 mm.
- 6-piece, wall thickness 30 mm.
- Easy self-installation by clamping. Removable for easy cleaning.



Product features

| | | | | |
|--|---|------------------------------------|---|------------------------------------|
| <p>Dimensions</p> <p>350 mm × 250 mm × 310 mm</p> | <p>Internal dimensions L x W x H</p> <p>290 mm × 190 mm × 250 mm</p> | <p>Length</p> <p>350 mm</p> | <p>Suitable for</p> <p>Missing translation</p> | <p>Weight</p> <p>0.5 kg</p> |
| <p>Width</p> <p>250 mm</p> | | | | |