



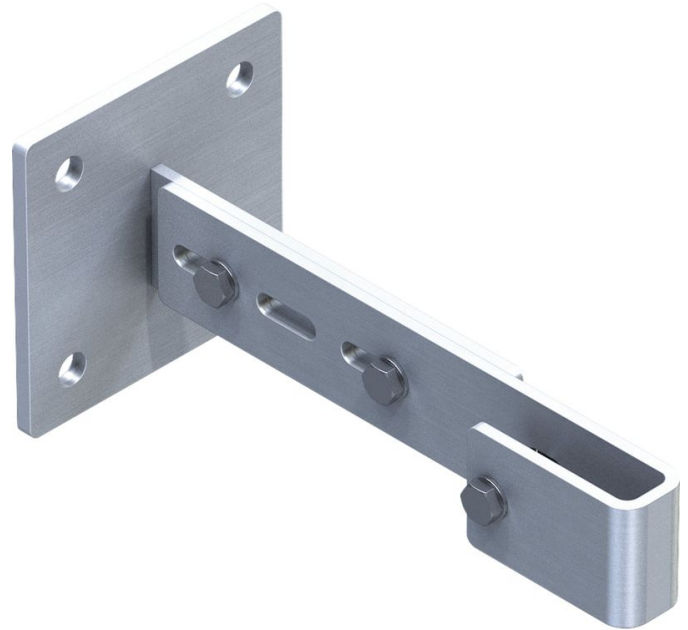
Wall bracket, adjustable - 44251

Product description

- Adjustable from 275 to 375 mm.

Hints and special features

The maximum distance between the individual wall brackets is 2.00 m. But each ladder section must be mounted with at least 4 wall brackets. A separate static calculation will be required.



Product features

Material	Warranty	Weight
Stainless steel	10 years	1.3 kg