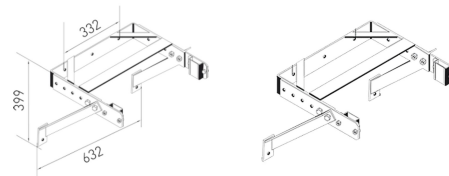
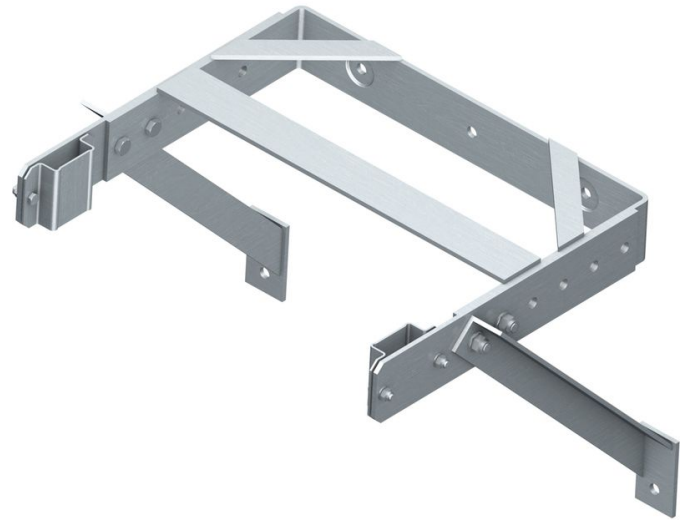




Wall bracket, U-shaped, adjustable - 44260

Product description

- Wall clearance can be adjusted from 400 to 600 mm.
- Incl. transverse bracing and transverse support.
- Hole spacing, bar: 332 mm.
- Hole spacing, supports: 577 mm.
- Overall width, bar 622 mm.



Product features

Material	Warranty	Weight
Stainless steel	10 years	13.8 kg