

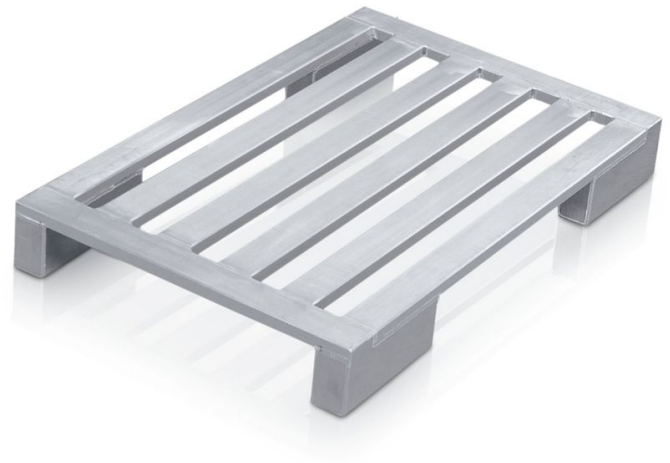


Aluminium flat pallet with long corner feet - 45175

Hygienic pallet, sturdy and suitable for use on roller conveyors.

Product description

- Hygienic pallet, sturdy and suitable for use on roller conveyors.
- Frame and longitudinal members made of sealed, heavy-duty, corrosion-resistant aluminium sections.
- Extra-long corner feet (L = 300 mm) combine the benefits of skid undercarriages and corner feet. For example, they are suitable for use on roller conveyors and in high-bay warehouses.
- There is plenty of space to accommodate forklift arms. No full-length runners to get in the way and hence less risk of damage.
- Seams welded watertight.



Product features

Dimensions 1.200 mm × 800 mm × 150 mm	Length 1200 mm	Load capacity 1000 kg	Material aluminium	Number of rungs 4
Weight 12.3 kg	Width 800 mm			