

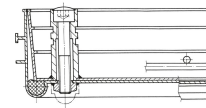


Aluminium shaft covers with trough - 47004

Walkable or drivable shaft covers with choice of surface for indoor and outdoor use.

Product description

- Compliant with DIN EN 124 in conjunction with DIN 1229.
- Tapered profile-section construction with multiple bolted joints.
- Easy to open, no jamming.
- Odour-tight and impervious to surface water.
- Load capacity for shaft cover with cover trough: test force 125 kN (= 12.5 t), only after the cover trough has been filled with B 45 concrete (grain 0-8).
- Incl. lift-out handles (pair) made from stainless steel, comprising one self-lifting opening handle and one lift-out handle.
- Trough depth 60 mm (of which 40 mm covered with construction steel grating and 20 mm free area)



Product features

Design height	80 mm
Inside shaft length	600 mm
Inside shaft size	600mm × 600mm
Inside shaft width	600 mm
Material, cover	aluminium



Material, frame	aluminium
Outside dimensions max. L x W x H	740 mm × 740 mm
Transport dimensions	740 mm × 740 mm × 70 mm
Trough depth	60 mm

ZARGES (U.K.) Ltd.

Blackwater Trading Estate, The Causeway
CM9 4LJ Maldon, Essex

Tel: 01908 641118

Fax:
sales@zarges.co.uk

www.zarges.com/uk

Effective 28/6/2026
Subject to change or error.