

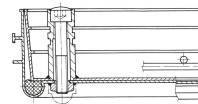


# Aluminium shaft covers with trough - 47005

Walkable or drivable shaft covers with choice of surface for indoor and outdoor use.

## Product description

- Compliant with DIN EN 124 in conjunction with DIN 1229.
- Tapered profile-section construction with multiple bolted joints.
- Easy to open, no jamming.
- Odour-tight and impervious to surface water.
- Load capacity for shaft cover with cover trough: test force 125 kN (= 12.5 t), only after the cover trough has been filled with B 45 concrete (grain 0-8).
- Incl. lift-out handles (pair) made from stainless steel, comprising one self-lifting opening handle and one lift-out handle.
- Trough depth 60 mm (of which 40 mm covered with construction steel grating and 20 mm free area)



## Product features

Design height <b>80 mm</b>	Inside shaft length <b>635 mm</b>	Inside shaft size <b>635mm × 635mm</b>	Inside shaft width <b>635 mm</b>	Material, cover <b>aluminium</b>
Material, frame <b>aluminium</b>	Outside dimensions max. L x W x H <b>775 mm × 775 mm</b>	Transport dimensions <b>770 mm × 770 mm × 70 mm</b>	Trough depth <b>60 mm</b>	