

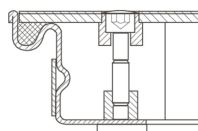


# Aluminium shaft covers with cover plate - 47024

Walkable shaft covers with cover plate for indoor use.

## Product description

- Compliant with DIN EN 124 in conjunction with DIN 1229.
- Tapered profile-section construction with multiple bolted joints.
- Easy to open, no jamming.
- EPDM seal (petrol-resistant seal available on request).
- Odour-tight and impervious to surface water.
- Load capacity of shaft cover with cover plate: test force 15 kN (= 1.5 t).
- Incl. lift-out handles (pair) made from stainless steel, comprising one self-lifting opening handle and one lift-out handle.



## Product features

Design height <b>63 mm</b>	Inside shaft length <b>1000 mm</b>	Inside shaft size <b>1.000mm × 1.000mm</b>	Inside shaft width <b>1000 mm</b>	Material, frame <b>Steel, galvanised</b>
Outside dimensions max. L x W x H <b>1.160 mm × 1.160 mm</b>	Transport dimensions <b>1.160 mm × 1.160 mm × 70 mm</b>			