

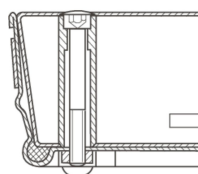
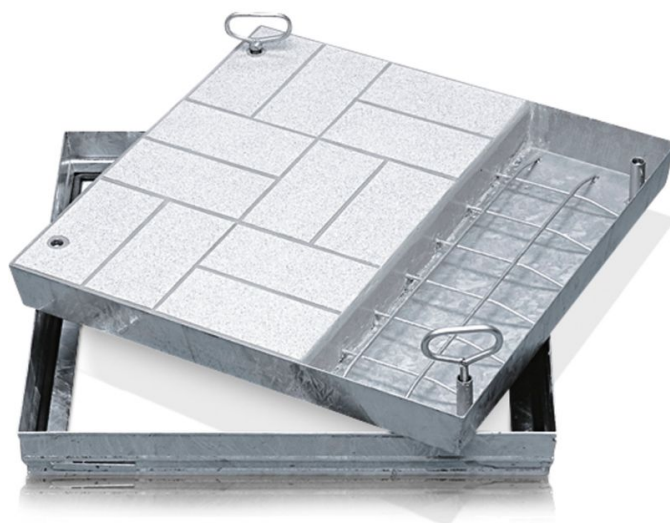


# Steel shaft covers, galvanised steel with trough - 47033

Walkable or drivable shaft covers with choice of surface for indoor and outdoor use.

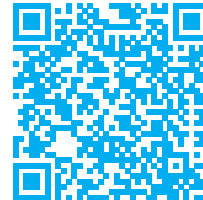
## Product description

- Compliant with DIN EN 124 in conjunction with DIN 1229.
- Tapered profile-section construction with multiple bolted joints.
- Easy to open, no jamming.
- Odour-tight and impervious to surface water.
- Load capacity for shaft cover with cover trough: test force 125 kN (= 12.5 t), only after the cover trough has been filled with B 45 concrete (grain 0-8).
- Incl. lift-out handles (pair) made from stainless steel, comprising one self-lifting opening handle and one lift-out handle.
- Trough depth 80 mm (of which 40 mm covered with construction steel grating and 40 mm free area)



## Product features

Design height	Inside shaft length	Inside shaft size	Inside shaft width	Material, cover
<b>90 mm</b>	<b>600 mm</b>	<b>600mm × 600mm</b>	<b>600 mm</b>	<b>Steel, galvanised</b>
Material, frame	Outside dimensions max. L x W x H	Transport dimensions	Trough depth	



Steel, galvanised

720 mm × 720 mm

720 mm × 720 mm ×  
70 mm

80 mm