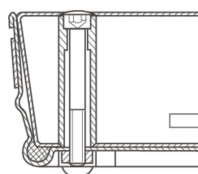


Steel shaft covers, galvanised steel with trough - 47037

Walkable or drivable shaft covers with choice of surface for indoor and outdoor use.

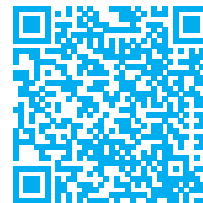
Product description

- Compliant with DIN EN 124 in conjunction with DIN 1229.
- Tapered profile-section construction with multiple bolted joints.
- Easy to open, no jamming.
- Odour-tight and impervious to surface water.
- Load capacity for shaft cover with cover trough: test force 125 kN (= 12.5 t), only after the cover trough has been filled with B 45 concrete (grain 0-8).
- Incl. lift-out handles (pair) made from stainless steel, comprising one self-lifting opening handle and one lift-out handle.
- Trough depth 80 mm (of which 40 mm covered with construction steel grating and 40 mm free area)



Product features

Design height	Inside shaft length	Inside shaft size	Inside shaft width	Material, cover
90 mm	1000 mm	1.000mm × 600mm	600 mm	Steel, galvanised
Material, frame	Outside dimensions max. L x W x H	Transport dimensions	Trough depth	



Steel, galvanised

1.120 mm × 720 mm

1.120 mm × 720 mm
× 90 mm

80 mm