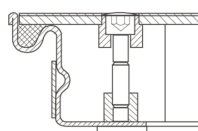


Steel shaft covers, galvanised steel with cover plate - 47052

Walkable shaft covers with cover plate for indoor use.

Product description

- Compliant with DIN EN 124 in conjunction with DIN 1229.
- Tapered profile-section construction with multiple bolted joints.
- Easy to open, no jamming.
- EPDM seal (petrol-resistant seal available on request).
- Odour-tight and impervious to surface water.
- Load capacity of shaft cover with cover plate: test force 15 kN (= 1.5 t).
- Incl. lift-out handles (pair) made from stainless steel, comprising one self-lifting opening handle and one lift-out handle.



Product features

Design height 63 mm	Inside shaft length 800 mm	Inside shaft size 800mm × 600mm	Inside shaft width 600 mm	Material, frame Steel, galvanised
Outside dimensions max. L x W x H 960 mm × 760 mm	Transport dimensions 960 mm × 760 mm × 70 mm			