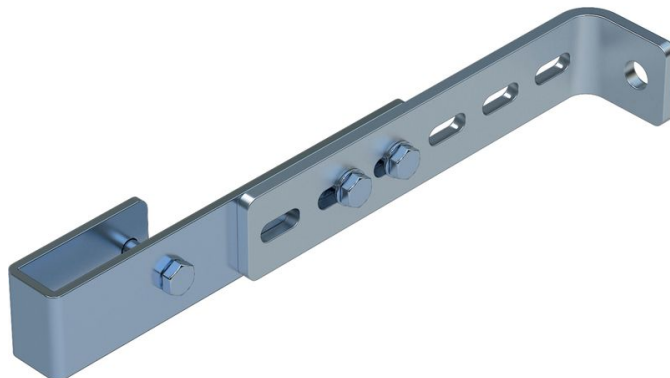


# Wall bracket, adjustable - 47308

## Product description

- Wall clearance can be adjusted from 150 mm to 300 mm.
- 1 set = 2 pcs.



## Hints and special features

2 sets of wall brackets are required for ladders with 4-9 rungs, 3 sets of wall brackets for ladders with 10-15 rungs, 5 sets of wall brackets for ladders with 16-24 rungs.

1 set = 2 pcs. (right/left).

Attachment materials (dowels etc.) are not included in the scope of delivery.

## Product features

Material	Suitable for	Warranty	Weight
<b>Stainless steel</b>	<b>GRP ladder</b>	<b>10 years</b>	<b>1.6 kg</b>