

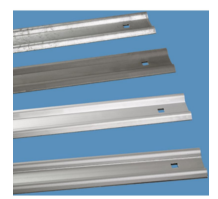


Single-section fixed ladder systems up to a height of 10 m, natural aluminium - 58257

Stationary access to buildings and machinery up to a height of 10 m, also suitable and approved for use as an escape route.

Product description

- For stationary mounting, on buildings either for maintenance in accordance with DIN 18 799-1 or as an emergency ladder system in accordance with DIN 14 094-1 or as machine access steps in accordance with DIN EN ISO 14 122-4.
- Safety cage as safety system, complies with any standard.
- Arrester rail as a safety system in accordance with DIN EN 353-1, DIN 18 799-1 and DIN EN ISO 14 122-4, can be supplied as a single-section fixed ladder even with climbing heights of over 10 m.
- Ladder width: 520 mm.
- Wall brackets with various wall clearances of up to 600 mm can be selected.
- The maximum permissible distance between two wall brackets is 2.00 m. But each ladder section must be mounted with at least two wall brackets.
- Safety barriers, access protection and platforms can be selected to suit individual requirements.
- We can also produce fixed-ladder designs that





differ from the standard specification on request.

Hints and special features

Dowels and screws/bolts for wall mounting are not included in the scope of delivery.

The prices for single-section systems listed below are calculated as follows: Wall bracket in the form of a U-bar, 200 mm rigid, straight stile extensions on both sides, incl. back cage in accordance with DIN 18 799-1. In the case of other requirements, please use our planning system for fixed ladders.

Product features

Material	Natural aluminium
Overall length incl. stile	6.7 m
Warranty	10 years
access height	5.6 m

ZARGES (U.K.) Ltd.

Blackwater Trading Estate, The Causeway
 CM9 4LJ Maldon, Essex

Tel: 01908 641118

Fax:
sales@zarges.co.uk

www.zarges.com/uk

Effective 27/6/2026
 Subject to change or error.