



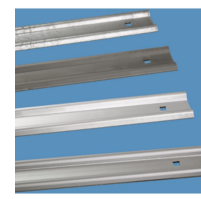
# Multi-section fixed ladder systems, stainless steel

## V4A - 58849

Multi-section access solution with crossover platform for buildings and machinery.

### Product description

- For permanent mounting on buildings either for maintenance in accordance with DIN 18 799-1 or as an emergency ladder system in accordance with DIN 14 094-1 or as machine access steps in accordance with DIN EN ISO 14 122-4.
- With safety cage.
- Ladder width: 520 mm.
- Wall brackets with various wall clearances of up to 600 mm can be selected.
- The maximum permissible distance between two wall brackets is 2.00 m. But each ladder section must be mounted with at least two wall brackets.
- Material: Stainless steel, 1.4571 (AISI 316 Ti) in accordance with EN 10088-2, corrosion class C4
- Safety barriers, access protection and platforms can be selected to suit individual requirements.
- We can also produce fixed-ladder designs that differ from the standard specification on request.



### Hints and special features

Dowels and screws/bolts for wall mounting are not included in the scope of delivery.

The prices for double-section systems listed below are



calculated as follows: Wall bracket in the form of a U-bar, 200 mm rigid, straight stile extensions on both sides, crossover platform, incl. back cage in accordance with DIN 18 799-1. In the case of other requirements, please use our planning system for fixed ladders.

## Product features

Material	stainless steel
Overall length incl. stile	16 m
Warranty	10 years
access height	14.9 m

ZARGES (U.K.) Ltd.

8 Holdom Avenue. Saxon Park Ind. Est.  
Bletchley MK1 1QU

Tel: 01908 641118

Fax:  
sales@zarges.co.uk

[www.zarges.com/uk](http://www.zarges.com/uk)

Effective 13/5/2026  
Subject to change or error.