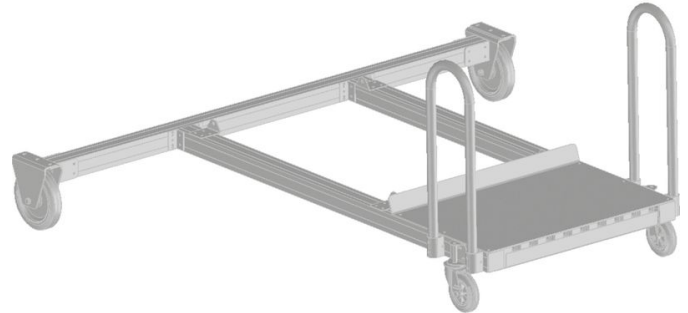




# Mandatory module - chassis - 591010

## Product description

- Two versions available, with sliding handles:
- Standard chassis with fixed-length stabiliser.  
Equipped with 2 swivel and 2 fixed castors with brake for mobility.
- Chassis with extendable stabilisers and adjustable foot plates (adjustment range 200 mm) for optimal stability and levelling out on uneven ground.  
Equipped with 2 swivel and 2 fixed castors with brake for mobility.



## Product features

### Transport dimensions

**2.370 mm × 2.335 mm × 1.025 mm**

### Weight

**243.7 kg**