

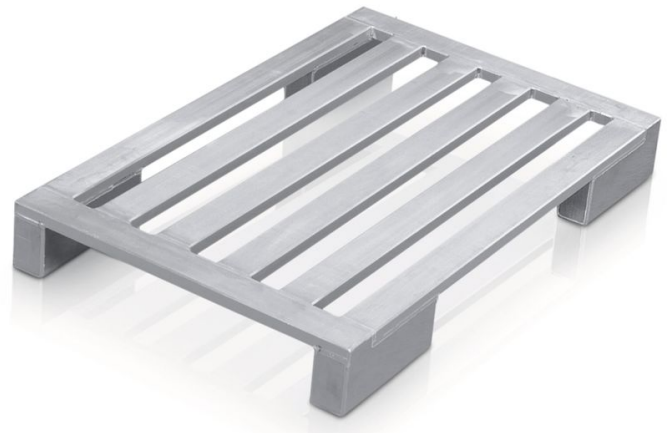


Flat pallet with long corner feet

Hygienic pallet, sturdy and suitable for use on roller conveyors.

Product description

- Hygienic pallet, sturdy and suitable for use on roller conveyors.
- Frame and longitudinal members made of sealed, heavy-duty, corrosion-resistant aluminium sections.
- Extra-long corner feet (L = 300 mm) combine the benefits of skid undercarriages and corner feet. For example, they are suitable for use on roller conveyors and in high-bay warehouses.
- Ample space for fork entry. No protruding, continuous runners, thus reducing the risk of damage.
- Seams welded watertight.



Product features

Length	1200 mm
Load capacity	1000 kg
Material	aluminium

Product variants



	45175	45185
Dimensions	1.200 mm × 800 mm × 150 mm	1.200 mm × 1.000 mm × 150 mm
Number of rungs	4	5
Weight	12.3 kg	13.9 kg
Width	800 mm	1000 mm

ZARGES (U.K.) Ltd.

Blackwater Trading Estate, The Causeway
 CM9 4LJ Maldon, Essex

Tel: 01908 641118

Fax:
sales@zarges.co.uk

www.zarges.com/uk

Effective 21/6/2026
 Subject to change or error.